

CATALOGUE NO. 8635.7

EMBARGOED UNTIL 11.30 A.M. 3 JUNE 1994

## TOURIST ACCOMMODATION, NORTHERN TERRITORY, MARCH QUARTER 1994

### MAIN FEATURES

MARCH QUARTER 1994  
COMPARED WITH  
MARCH QUARTER 1993

#### HOTELS, MOTELS AND GUEST HOUSES

- Rooms available increased by 2.9 per cent from 5,131 to 5,279 while bed spaces increased slightly from 14,998 to 15,099.
- Room nights occupied increased by 16.6 per cent from 175,463 to 204,642 overall. For the published areas, increases were 48.1 per cent for Katherine, 26.0 per cent for Alice Springs, 14.0 per cent for Tennant Creek and 8.2 per cent for Darwin City.
- The room occupancy rate overall rose from 38.5 per cent to 43.1 per cent, with Darwin City, Katherine, Alice Springs and Tennant Creek recording increases of 3.8, 7.4, 6.4 and 2.3 percentage points, respectively.
- Guest nights increased by 14.4 per cent from 299,017 to 342,204 and the bed occupancy rate increased from 22.5 per cent to 25.2 per cent.
- Guest arrivals at hotels, motels and guest houses increased by 31.6 per cent from 141,754 to 186,599 while the average length of stay fell from 2.1 to 1.8 days.
- Takings from accommodation increased by 15.4 per cent from \$13.4m to \$15.5m overall while average takings per room night occupied fell from \$77 to \$76. Accommodation takings for Darwin City increased by 17.8 per cent, for Alice Springs the increase was 12.1 per cent, for Katherine 47.9 per cent and for Tennant Creek 17.2 per cent. For the published areas, average takings per room night occupied ranged from \$76 for Darwin City to \$54 for Katherine.

#### HOLIDAY FLATS, UNITS AND HOUSES

- The number of units, etc. available for short-term letting at 250 was almost unchanged while unit nights occupied rose by 12.1 per cent from 12,803 to 14,355.
- The unit occupancy rate consequently increased from 57.4 per cent to 63.8 per cent.
- Unit lettings increased by 65.2 per cent from 2,398 to 3,962 and the average length of stay dropped from 5.3 days to 3.6 days.
- Accommodation takings increased by 19.7 per cent from \$0.75m to \$0.90m with the average takings per unit night occupied increasing by 6.8 per cent from \$59 to \$63.

#### CARAVAN PARKS

- Caravan park capacity available decreased by 3.3 per cent from 9,183 to 8,880 powered and unpowered sites and cabins, etc. and site nights occupied decreased by 6.7 per cent from 148,543 to 138,523.
- The site occupancy rate fell by 0.7 percentage points to 17.3 per cent.
- Accommodation takings rose by 1.4 per cent from \$1.5m to \$1.6m.

#### VISITOR HOSTELS

- Bed spaces available decreased by 4.8 per cent from 3,091 to 2,944.
- Guest nights sold decreased by 5.5 per cent from 106,305 to 100,413 and the bed occupancy rate decreased from 38.2 per cent to 38.1 per cent.
- Guest arrivals rose from 43,785 to 51,868 and the average length of stay fell from 2.4 days to 1.9 days.
- Accommodation takings were steady at \$1.3m and the average takings per guest night sold increased from \$12 to \$13.

#### INQUIRIES

- *for further information about statistics in this publication and the availability of related unpublished statistics, contact Brian Hay on 008 077304 or any ABS office.*
- *for information about other ABS statistics and services, please contact Information Services on Darwin (089) 432 111 or any ABS office.*

TABLE 2 — SUMMARY OF CARAVAN PARKS, NORTHERN TERRITORY

Particulars	Unit	Quarter ended				Year ended			
		December 1992	March 1993	June 1993	September 1993	December 1993	March 1994	March 1993	March 1994
<b>SHORT-TERM CARAVAN PARKS</b>									
Establishments	No.	55	55	57	57	55	55	..	..
Capacity									
On-site vans	No.	91	85	94	68	65	64	..	..
Other powered sites	No.	2,392	2,366	2,578	2,594	2,553	2,573	..	..
Unpowered sites	No.	4,938	3,715	3,631	3,200	3,127	3,088	..	..
Cabins, etc.	No.	138	150	157	142	147	151	..	..
<i>Total capacity</i>	<i>No.</i>	<i>7,559</i>	<i>6,316</i>	<i>6,460</i>	<i>6,004</i>	<i>5,892</i>	<i>5,876</i>	..	..
Sites occupied by long-term guests	No.	139	159	211	213	182	187	..	..
Other sites permanently reserved	No.	5	7	4	3	3	5	..	..
Employment (persons)	No.	279	270	249	256	206	213	..	..
Site nights occupied	No.	83,585	51,440	127,988	182,568	65,711	44,500	495,380	420,767
Site occupancy rate	per cent	12.0	9.0	22.1	33.2	12.1	8.4	18.1	19.1
Takings from accommodation	\$'000	909	664	1,953	2,725	949	666	6,252	6,293
<b>LONG-TERM CARAVAN PARKS</b>									
Establishments	No.	24	24	24	25	25	25	..	..
Capacity									
On-site vans	No.	238	233	233	245	249	250	..	..
Other powered sites	No.	1,846	1,850	1,824	1,851	1,902	1,897	..	..
Unpowered sites	No.	711	712	722	759	785	784	..	..
Cabins, etc.	No.	73	72	73	78	72	73	..	..
<i>Total capacity</i>	<i>No.</i>	<i>2,868</i>	<i>2,867</i>	<i>2,852</i>	<i>2,933</i>	<i>3,008</i>	<i>3,004</i>	..	..
Sites occupied by long-term guests	No.	937	923	947	911	871	878	..	..
Other sites permanently reserved	No.	1	7	6	5	5	8	..	..
Employment (persons)	No.	99	92	80	94	89	86	..	..
Site nights occupied	No.	107,581	97,103	121,591	131,435	102,805	94,023	442,768	449,854
Site occupancy rate	per cent	40.8	37.6	46.9	48.7	37.1	34.8	45.3	41.8
Takings from accommodation	\$'000	986	880	1,209	1,414	1,019	899	4,270	4,542
<b>TOTAL CARAVAN PARKS</b>									
Establishments	No.	79	79	81	82	80	80	..	..
Capacity									
On-site vans	No.	329	318	327	313	314	314	..	..
Other powered sites	No.	4,238	4,216	4,402	4,445	4,455	4,470	..	..
Unpowered sites	No.	5,649	4,427	4,353	3,959	3,912	3,872	..	..
Cabins, etc.	No.	211	222	230	220	219	224	..	..
<i>Total capacity</i>	<i>No.</i>	<i>10,427</i>	<i>9,183</i>	<i>9,312</i>	<i>8,937</i>	<i>8,900</i>	<i>8,880</i>	..	..
Sites occupied by long-term guests	No.	1,076	1,082	1,158	1,124	1,053	1,065	..	..
Other sites permanently reserved	No.	6	14	10	8	8	13	..	..
Employment (persons)	No.	378	362	329	350	295	299	..	..
Site nights occupied	No.	191,166	148,543	249,579	314,003	168,516	138,523	938,148	870,621
Site occupancy rate	per cent	19.9	18.0	29.8	38.3	20.6	17.3	25.3	26.6
Takings from accommodation	\$'000	1,895	1,544	3,162	4,140	1,969	1,566	10,522	10,835

TABLE 1 — SUMMARY OF HOTELS, MOTELS AND GUEST HOUSES WITH FACILITIES, NORTHERN TERRITORY (a)

Particulars	Unit	Quarter ended				Year ended			
		December 1992	March 1993	June 1993	September 1993	December 1993	March 1994	March 1993	March 1994
<b>LICENSED HOTELS WITH FACILITIES</b>									
Establishments	No.	30	30	30	30	29	29	..	..
Guest rooms	No.	2,005	2,004	2,006	2,005	1,997	1,992	..	..
Bed spaces	No.	5,688	5,711	5,764	5,684	5,626	5,621	..	..
Employment (persons)	No.	1,711	1,663	1,755	1,887	1,801	1,786	..	..
Room nights occupied	No.	97,361	81,406	106,234	126,621	106,056	84,384	380,196	423,295
Room occupancy rate	per cent	52.8	45.2	58.2	68.6	57.7	47.1	52.9	58.0
Guest nights	No.	163,234	135,244	174,898	210,920	171,682	142,223	628,279	699,723
Bed occupancy rate	per cent	31.2	26.3	33.3	40.3	33.2	28.1	30.8	33.8
Guest arrivals	No.	71,338	67,013	87,816	108,674	88,014	82,527	293,458	367,031
Average length of stay	days	2.3	2.0	2.0	1.9	2.0	1.7	2.1	1.9
Takings from accommodation	\$'000	9,272	7,822	10,091	12,842	10,470	8,171	36,898	41,573
<b>MOTELS AND GUEST HOUSES WITH FACILITIES</b>									
Establishments	No.	61	60	60	63	63	64	..	..
Guest rooms	No.	3,204	3,127	3,159	3,290	3,285	3,287	..	..
Bed spaces	No.	9,445	9,287	9,352	9,563	9,483	9,478	..	..
Employment (persons)	No.	870	960	1,018	1,168	1,067	1,014	..	..
Room nights occupied	No.	121,569	94,057	147,981	201,625	141,124	120,258	515,787	610,988
Room occupancy rate	per cent	41.7	34.1	51.5	66.6	46.7	40.7	45.5	51.4
Guest nights	No.	212,918	163,773	265,074	366,629	237,837	199,981	914,305	1,069,521
Bed occupancy rate	per cent	24.8	20.0	31.1	41.7	27.3	23.4	27.3	30.9
Guest arrivals	No.	96,804	74,741	116,851	168,383	117,789	104,072	420,999	507,095
Average length of stay	days	2.2	2.2	2.3	2.2	2.0	1.9	2.2	2.1
Takings from accommodation	\$'000	7,793	5,621	9,760	13,738	9,027	7,340	33,621	39,864
<b>TOTAL HOTELS, MOTELS AND GUEST HOUSES WITH FACILITIES</b>									
Establishments	No.	91	90	90	93	92	93	..	..
Guest rooms	No.	5,209	5,131	5,165	5,295	5,282	5,279	..	..
Bed spaces	No.	15,133	14,998	15,116	15,247	15,109	15,099	..	..
Employment (persons)	No.	2,581	2,623	2,773	3,055	2,868	2,800	..	..
Room nights occupied	No.	218,930	175,463	254,215	328,246	247,180	204,642	895,983	1,034,283
Room occupancy rate	per cent	46.0	38.5	54.1	67.4	50.9	43.1	48.4	53.9
Guest nights	No.	376,152	299,017	439,972	577,549	409,519	342,204	1,542,584	1,769,244
Bed occupancy rate	per cent	27.2	22.5	32.0	41.2	29.5	25.2	28.6	32.0
Guest arrivals	No.	168,142	141,754	204,667	277,057	205,803	186,599	714,457	874,126
Average length of stay	days	2.2	2.1	2.1	2.1	2.0	1.8	2.2	2.0
Takings from accommodation	\$'000	17,064	13,443	19,851	26,579	19,496	15,510	70,520	81,437

(a) From December quarter 1993, establishments with fewer than 5 rooms have been formally excluded from the scope of this collection. See Explanatory Note 2 (page 14).

TABLE 5 — HOTELS, MOTELS AND GUEST HOUSES WITH FACILITIES BY ESTABLISHMENT SIZE,  
NORTHERN TERRITORY (a)

Particulars	Establishment size (number of rooms)						Northern Territory
	1-9	10-15	16-25	26-50	51-100	101+	
ESTABLISHMENTS, CAPACITY AND EMPLOYMENT							
March quarter 1993—							
Establishments	6	7	18	21	25	13	90
Guest rooms	37	86	367	761	1,841	2,039	5,131
Bed spaces	109	256	1,120	2,237	5,250	6,026	14,998
Employment (persons)	35	75	130	383	853	1,147	2,623
March quarter 1994—							
Establishments	6	9	19	19	27	13	93
Guest rooms	39	116	391	691	2,006	2,036	5,279
Bed spaces	114	341	1,224	2,042	5,484	5,894	15,099
Employment (persons)	34	90	142	368	976	1,190	2,800
ROOM NIGHTS OCCUPIED							
March quarter 1993	520	1,758	9,621	21,529	50,669	91,366	175,463
1994—							
January	179	1,080	3,532	7,201	21,793	25,847	59,632
February	182	833	4,031	6,922	22,971	27,159	62,098
March	256	859	4,626	9,104	28,648	39,419	82,912
March quarter 1994	617	2,772	12,189	23,227	73,412	92,425	204,642
ROOM OCCUPANCY RATES (per cent)							
March quarter 1993	16.3	22.7	29.1	31.4	31.7	49.8	38.5
1994—							
January	14.8	30.0	29.1	33.6	35.0	41.0	36.4
February	16.7	25.6	36.8	35.8	40.9	47.6	42.0
March	21.2	23.9	38.2	42.5	46.1	62.5	50.7
March quarter 1994	17.6	26.6	34.6	37.3	40.7	50.4	43.1
GUEST NIGHTS							
March quarter 1993	889	3,055	16,196	37,597	86,654	154,626	299,017
1994—							
January	358	1,989	6,247	13,487	36,390	46,807	105,278
February	317	1,347	6,461	11,302	36,049	45,716	101,192
March	428	1,370	7,158	14,702	45,770	66,306	135,734
March quarter 1994	1,103	4,706	19,866	39,491	118,209	158,829	342,204
BED OCCUPANCY RATES (per cent)							
March quarter 1993	9.5	13.3	16.1	18.7	19.1	28.5	22.5
1994—							
January	10.1	18.8	16.5	21.3	21.4	25.6	22.5
February	9.9	14.1	18.9	19.8	23.5	27.7	23.9
March	12.1	13.0	18.9	23.2	26.9	36.3	29.0
March quarter 1994	10.8	15.3	18.0	21.5	24.0	29.9	25.2
GUEST ARRIVALS							
March quarter 1993	797	2,682	7,422	15,734	38,615	76,504	141,754
1994—							
January	320	1,490	3,076	6,734	18,761	26,031	56,412
February	231	971	3,115	5,746	18,722	28,085	56,870
March	259	1,055	3,406	6,874	23,828	37,895	73,317
March quarter 1994	810	3,516	9,597	19,354	61,311	92,011	186,599
AVERAGE LENGTH OF STAY (days)							
March quarter 1993	1.1	1.1	2.2	2.4	2.2	2.0	2.1
March quarter 1994	1.4	1.3	2.1	2.0	1.9	1.7	1.8
TAKINGS FROM ACCOMMODATION (\$'000)							
March quarter 1993	21	96	456	1,143	3,069	8,658	13,443
1994—							
January	8	54	170	361	1,353	2,544	4,489
February	8	41	192	352	1,447	2,595	4,635
March	11	42	223	469	1,829	3,813	6,387
March quarter 1994	27	137	585	1,182	4,628	8,951	15,510

(a) From December quarter 1993, establishments with fewer than 5 rooms have been formally excluded from the scope of this collection. See Explanatory Note 2 (page 14).

TABLE 3 — SUMMARY OF HOLIDAY FLATS, UNITS AND HOUSES, NORTHERN TERRITORY

Particulars	Unit	Quarter ended				Year ended			
		December 1992	March 1993	June 1993	September 1993	December 1993	March 1994	March 1993	March 1994
Letting entities	No.	10	10	10	10	10	10	..	..
Flats, units and houses									
Single bedroom	No.	142	141	150	149	143	142	..	..
Multiple bedroom	No.	107	107	104	105	108	108	..	..
<i>Total flats, units and houses</i>	<i>No.</i>	<i>249</i>	<i>248</i>	<i>254</i>	<i>254</i>	<i>251</i>	<i>250</i>	<i>..</i>	<i>..</i>
Bed spaces	No.	999	994	1,020	983	1,027	1,022	..	..
Employment (persons) (a)	No.	49	54	52	54	63	50	..	..
Unit nights occupied	No.	13,173	12,803	15,226	18,535	13,704	14,355	55,943	61,820
Unit occupancy rate	per cent	57.5	57.4	65.9	79.3	60.5	63.8	62.2	67.5
Unit lettings	No.	3,004	2,398	3,767	5,329	3,765	3,962	13,359	16,823
Average length of stay	days	4.4	5.3	4.0	3.5	3.6	3.6	4.2	3.7
Takings from accommodation	\$'000	746	750	1,162	1,469	971	898	3,398	4,501

(a) Employment numbers exclude real estate agents and their employees.

TABLE 4 — SUMMARY OF VISITOR HOSTELS, NORTHERN TERRITORY

Particulars	Unit	Quarter ended				Year ended			
		December 1992	March 1993	June 1993	September 1993	December 1993	March 1994	March 1993	March 1994
Establishments	No.	36	37	36	40	39	39	..	..
Bed spaces	No.	3,318	3,091	3,164	3,025	2,994	2,944	..	..
Employment (persons)	No.	163	166	181	176	160	141	..	..
Guest nights	No.	119,930	106,305	136,079	169,023	116,606	100,413	515,391	522,121
Bed occupancy rate	per cent	42.4	38.2	47.3	60.7	42.3	38.1	46.0	47.2
Guest arrivals	No.	51,058	43,785	61,466	71,247	50,754	51,868	217,136	235,335
Average length of stay	days	2.3	2.4	2.2	2.4	2.3	1.9	2.4	2.2
Takings from accommodation	\$'000	1,510	1,284	1,605	1,983	1,436	1,279	6,692	6,302

TABLE 6B — HOTELS, MOTELS AND GUEST HOUSES WITH FACILITIES BY STAR GRADING,  
NORTHERN TERRITORY (a)

Particulars	Licensed hotels with facilities	Motels and guest houses	Star grading					Ungraded	Northern Territory
			1	2	3	4 and 5			
ESTABLISHMENTS, CAPACITY AND EMPLOYMENT									
<i>March quarter 1993—</i>									
Establishments	30	60	10	30	26	6	18	90	
Guest rooms	2,004	3,127	236	1,203	2,087	1,097	508	5,131	
Bed spaces	5,711	9,287	652	3,567	6,212	3,151	1,416	14,998	
Employment (persons)	1,663	960	94	456	855	1,049	169	2,623	
<i>March quarter 1994—</i>									
Establishments	29	64	14	39	20	5	15	93	
Guest rooms	1,992	3,287	339	1,846	1,808	987	299	5,279	
Bed spaces	5,621	9,478	997	5,215	5,320	2,716	851	15,099	
Employment (persons)	1,786	1,014	119	692	824	1,022	143	2,800	
ROOM NIGHTS OCCUPIED									
<i>March quarter 1993</i>	81,406	94,057	4,301	33,961	83,481	43,963	9,757	175,463	
<i>1994—</i>									
January	24,579	35,053	3,272	17,593	24,410	11,593	2,764	59,632	
February	25,112	36,986	3,006	17,804	27,290	10,864	3,134	62,098	
March	34,693	48,219	2,978	24,291	35,157	16,954	3,532	82,912	
<i>March quarter 1994</i>	84,384	120,258	9,256	59,688	86,857	39,411	9,430	204,642	
ROOM OCCUPANCY RATES (per cent)									
<i>March quarter 1993</i>	45.2	34.1	20.2	31.4	45.9	44.5	21.4	38.5	
<i>1994—</i>									
January	39.8	34.4	31.1	30.7	43.6	37.9	29.8	36.4	
February	45.0	40.2	31.7	34.4	53.9	39.3	37.4	42.0	
March	56.2	47.3	28.3	42.4	62.7	55.4	38.1	50.7	
<i>March quarter 1994</i>	47.1	40.7	30.3	35.9	53.4	44.4	35.0	43.1	
GUEST NIGHTS									
<i>March quarter 1993</i>	135,244	163,773	8,659	61,917	142,319	70,939	15,183	299,017	
<i>1994—</i>									
January	43,400	61,878	6,248	31,166	43,422	20,322	4,120	105,278	
February	41,911	59,281	5,132	27,913	45,629	17,727	4,791	101,192	
March	56,912	78,822	4,933	38,650	60,539	26,384	5,228	135,734	
<i>March quarter 1994</i>	142,223	199,981	16,313	97,729	149,590	64,433	14,139	342,204	
BED OCCUPANCY RATES (per cent)									
<i>March quarter 1993</i>	26.3	20.0	14.8	19.3	26.3	25.0	12.0	22.5	
<i>1994—</i>									
January	24.9	21.1	20.2	19.3	26.3	24.1	15.6	22.5	
February	26.6	22.3	18.4	19.1	30.6	23.3	20.1	23.9	
March	32.7	26.8	16.0	23.9	36.7	31.3	19.8	29.0	
<i>March quarter 1994</i>	28.1	23.4	18.2	20.8	31.2	26.4	18.5	25.2	
GUEST ARRIVALS									
<i>March quarter 1993</i>	67,013	74,741	5,505	25,869	62,368	37,849	10,163	141,754	
<i>1994—</i>									
January	24,258	32,154	3,280	16,945	19,826	13,600	2,761	56,412	
February	25,413	31,457	2,116	14,871	24,378	12,303	3,202	56,870	
March	32,856	40,461	2,219	20,100	28,931	18,771	3,296	73,317	
<i>March quarter 1994</i>	82,527	104,072	7,615	51,916	73,135	44,674	9,259	186,599	
AVERAGE LENGTH OF STAY (days)									
<i>March quarter 1993</i>	2.0	2.2	1.6	2.4	2.3	1.9	1.5	2.1	
<i>March quarter 1994</i>	1.7	1.9	2.1	1.9	2.0	1.4	1.5	1.8	
TAKINGS FROM ACCOMMODATION (\$'000)									
<i>March quarter 1993</i>	7,822	5,621	180	1,721	5,968	5,010	565	13,443	
<i>1994—</i>									
January	2,431	2,058	125	908	1,926	1,407	123	4,489	
February	2,339	2,295	117	924	2,200	1,237	157	4,635	
March	3,401	2,986	124	1,282	2,795	2,008	178	6,387	
<i>March quarter 1994</i>	8,171	7,340	366	3,115	6,921	4,652	457	15,510	

(a) From December quarter 1993, establishments with fewer than 5 rooms have been formally excluded from the scope of this collection. See Explanatory Note 2 (page 14).

TABLE 6A — HOTELS, MOTELS AND GUEST HOUSES WITH FACILITIES BY STAR GRADING BY STATISTICAL DIVISION, NORTHERN TERRITORY (a)

Particulars	Darwin (SD)				Northern Territory - Balance (SD)			
	Star grading			Total	Star grading			Total
	2	3, 4 and 5	Ungraded and 1		2	3, 4 and 5	Ungraded and 1	
<b>ESTABLISHMENTS, CAPACITY AND EMPLOYMENT</b>								
<i>March quarter 1993—</i>								
Establishments	11	10	5	26	19	22	23	64
Guest rooms	469	1,058	128	1,655	734	2,126	616	3,476
Bed spaces	1,419	2,736	340	4,495	2,148	6,627	1,728	10,503
Employment (persons)	169	1,025	19	1,213	287	879	244	1,410
<i>March quarter 1994—</i>								
Establishments	9	8	9	26	30	17	20	67
Guest rooms	442	999	218	1,659	1,404	1,796	420	3,620
Bed spaces	1,273	2,498	651	4,422	3,942	5,538	1,197	10,677
Employment (persons)	227	1,001	80	1,308	465	845	182	1,492
<b>ROOM NIGHTS OCCUPIED</b>								
<i>March quarter 1993</i>	19,680	48,225	4,135	72,040	14,281	79,219	9,923	103,423
<i>1994—</i>								
January	5,937	12,458	3,158	21,553	11,656	23,545	2,878	38,079
February	6,541	15,322	3,339	25,202	11,263	22,832	2,801	36,896
March	8,799	19,062	3,337	31,198	15,492	33,049	3,173	51,714
<i>March quarter 1994</i>	21,277	46,842	9,834	77,953	38,411	79,426	8,852	126,689
<b>ROOM OCCUPANCY RATES (per cent)</b>								
<i>March quarter 1993</i>	46.6	50.6	35.9	48.4	21.6	42.7	17.9	33.7
<i>1994—</i>								
January	43.3	40.2	46.7	41.9	26.8	42.3	22.1	33.9
February	52.9	54.8	54.7	54.3	28.7	45.4	23.8	36.4
March	64.2	61.6	49.4	60.7	35.6	59.4	24.4	46.1
<i>March quarter 1994</i>	53.5	52.1	50.1	52.2	30.4	49.1	23.4	38.9
<b>GUEST NIGHTS</b>								
<i>March quarter 1993</i>	35,697	75,974	6,241	117,912	26,220	137,284	17,601	181,105
<i>1994—</i>								
January	10,662	21,790	4,780	37,232	20,504	41,954	5,588	68,046
February	10,384	24,696	5,109	40,189	17,529	38,660	4,814	61,003
March	14,247	30,116	5,017	49,380	24,403	56,807	5,144	86,354
<i>March quarter 1994</i>	35,293	76,602	14,906	126,801	62,436	137,421	15,546	215,403
<b>BED OCCUPANCY RATES (per cent)</b>								
<i>March quarter 1993</i>	28.0	30.9	20.4	29.1	13.6	23.7	11.4	19.5
<i>1994—</i>								
January	27.0	28.1	23.7	27.2	16.8	24.4	15.1	20.6
February	29.1	35.3	28.0	32.5	15.9	24.9	14.4	20.4
March	36.1	38.9	24.9	36.0	20.0	33.1	13.9	26.1
<i>March quarter 1994</i>	30.8	34.1	25.4	31.9	17.6	27.6	14.4	22.4
<b>GUEST ARRIVALS</b>								
<i>March quarter 1993</i>	10,434	24,013	2,768	37,215	15,435	76,204	12,900	104,539
<i>1994—</i>								
January	4,217	9,391	2,194	15,802	12,728	24,035	3,847	40,610
February	4,057	13,187	2,113	19,357	10,814	23,494	3,205	37,513
March	5,770	14,182	2,009	21,961	14,330	33,520	3,506	51,356
<i>March quarter 1994</i>	14,044	36,760	6,316	57,120	37,872	81,049	10,558	129,479
<b>AVERAGE LENGTH OF STAY (days)</b>								
<i>March quarter 1993</i>	3.4	3.2	2.3	3.2	1.7	1.8	1.4	1.7
<i>March quarter 1994</i>	2.5	2.1	2.4	2.2	1.6	1.7	1.5	1.7
<b>TAKINGS FROM ACCOMMODATION (\$'000)</b>								
<i>March quarter 1993</i>	1,006	3,844	166	5,017	716	7,133	578	8,427
<i>1994—</i>								
January	325	1,139	128	1,591	584	2,194	120	2,898
February	372	1,394	153	1,920	552	2,042	120	2,715
March	492	1,748	157	2,397	790	3,055	145	3,990
<i>March quarter 1994</i>	1,189	4,281	438	5,908	1,926	7,291	385	9,602

(a) From December quarter 1993, establishments with fewer than 5 room

a form

excluded fr

ie scope of this c

tion. See E

atory Note

ge 14).

TABLE 8 — HOLIDAY FLATS AND UNITS BY STATISTICAL DIVISION, NORTHERN TERRITORY

<i>Particulars</i>	<i>Darwin (SD)</i>	<i>Northern Territory - Balance (SD)</i>	<i>Northern Territory</i>
LETTING ENTITIES, CAPACITY AND EMPLOYMENT			
<i>March quarter 1993—</i>			
Letting entities	6	4	10
Flats, units and houses			
Single bedroom	79	62	141
Multiple bedroom	91	16	107
<i>Total flats, units and houses</i>	<i>170</i>	<i>78</i>	<i>248</i>
Bed spaces	659	335	994
Employment (persons) (a)	41	13	54
<i>March quarter 1994—</i>			
Letting entities	6	4	10
Flats, units and houses			
Single bedroom	73	69	142
Multiple bedroom	94	14	108
<i>Total flats, units and houses</i>	<i>167</i>	<i>83</i>	<i>250</i>
Bed spaces	652	370	1,022
Employment (persons) (a)	38	12	50
UNIT NIGHTS OCCUPIED			
<i>March quarter 1993</i>	<i>9,173</i>	<i>3,630</i>	<i>12,803</i>
<i>1994—</i>			
January	3,522	1,397	4,919
February	3,135	1,475	4,610
March	3,105	1,721	4,826
<i>March quarter 1994</i>	<i>9,762</i>	<i>4,593</i>	<i>14,355</i>
UNIT OCCUPANCY RATES (per cent)			
<i>March quarter 1993</i>	<i>60.0</i>	<i>51.7</i>	<i>57.4</i>
<i>1994—</i>			
January	68.0	54.3	63.5
February	67.0	63.5	65.9
March	60.0	66.9	62.3
<i>March quarter 1994</i>	<i>65.0</i>	<i>61.5</i>	<i>63.8</i>
UNIT LETTINGS			
<i>March quarter 1993</i>	<i>1,022</i>	<i>1,376</i>	<i>2,398</i>
<i>1994—</i>			
January	565	756	1,321
February	432	805	1,237
March	467	937	1,404
<i>March quarter 1994</i>	<i>1,464</i>	<i>2,498</i>	<i>3,962</i>
AVERAGE LENGTH OF STAY (days)			
<i>March quarter 1993</i>	<i>9.0</i>	<i>2.6</i>	<i>5.3</i>
<i>1994—</i>			
January	6.2	1.8	3.7
February	7.3	1.8	3.7
March	6.6	1.8	3.4
<i>March quarter 1994</i>	<i>6.7</i>	<i>1.8</i>	<i>3.6</i>
TAKINGS FROM ACCOMMODATION (\$'000)			
<i>March quarter 1993</i>	<i>611</i>	<i>139</i>	<i>750</i>
<i>1994—</i>			
January	255	76	331
February	182	78	260
March	198	109	307
<i>March quarter 1994</i>	<i>636</i>	<i>263</i>	<i>898</i>

(a) Employment numbers exclude real estate agents and their employees.



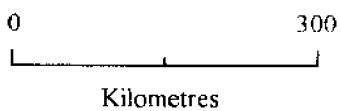
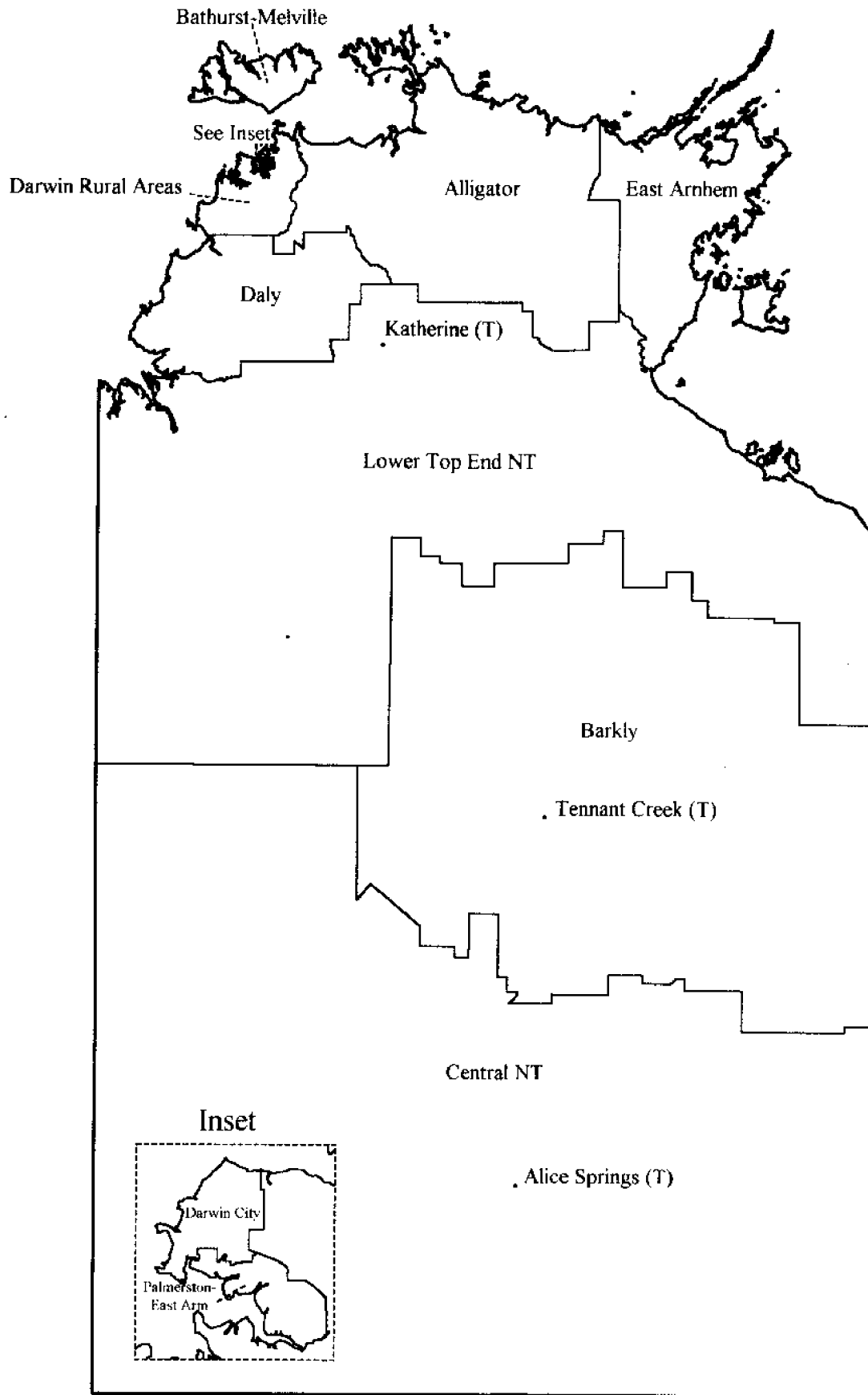
TABLE 9 — CARAVAN PARKS BY STATISTICAL AREA AND TYPE, NORTHERN TERRITORY

Particulars	Darwin (SD) and Alligator (SSD)	Darwin Rural Areas and Daly (SSDs)	Lower Top End Northern Territory (SSD)	Barkly (SSD)	Central Northern Territory (SSD)	Northern Territory		Total
						Short-term parks	Long-term parks	
<b>ESTABLISHMENTS, CAPACITY AND EMPLOYMENT</b>								
<i>March quarter 1993—</i>								
Establishments	10	16	22	10	21	55	24	79
Capacity								
On-site vans	26	152	13	24	103	85	233	318
Other powered sites	1,089	710	846	317	1,254	2,366	1,850	4,216
Unpowered sites	359	457	852	408	2,351	3,715	712	4,427
Cabins, flats, etc.	25	29	45	31	92	150	72	222
<i>Total capacity</i>	<i>1,499</i>	<i>1,348</i>	<i>1,756</i>	<i>780</i>	<i>3,800</i>	<i>6,316</i>	<i>2,867</i>	<i>9,183</i>
Sites occupied by long-term guests	356	277	97	19	333	159	923	1,082
Other sites permanently reserved	—	1	6	—	7	7	7	14
Employment (persons)	36	53	117	48	108	270	92	362
<i>March quarter 1994—</i>								
Establishments	10	18	23	10	19	55	25	80
Capacity								
On-site vans	27	160	12	23	92	64	250	314
Other powered sites	1,242	751	898	341	1,238	2,573	1,897	4,470
Unpowered sites	418	427	918	382	1,727	3,088	784	3,872
Cabins, flats, etc.	31	33	43	28	89	151	73	224
<i>Total capacity</i>	<i>1,718</i>	<i>1,371</i>	<i>1,871</i>	<i>774</i>	<i>3,146</i>	<i>5,876</i>	<i>3,004</i>	<i>8,880</i>
Sites occupied by long-term guests	337	283	103	22	320	187	878	1,065
Other sites permanently reserved	—	4	2	2	5	5	8	13
Employment (persons)	37	58	93	33	78	213	86	299
<b>SITE NIGHTS OCCUPIED</b>								
<i>March quarter 1993</i>	<i>41,728</i>	<i>28,657</i>	<i>14,245</i>	<i>4,689</i>	<i>59,224</i>	<i>51,440</i>	<i>97,103</i>	<i>148,543</i>
<i>1994—</i>								
January	13,135	10,202	4,943	1,631	17,020	14,884	32,047	46,931
February	11,475	9,261	4,236	1,409	14,574	11,862	29,093	40,955
March	13,880	10,209	5,656	1,937	18,955	17,754	32,883	50,637
<i>March quarter 1994</i>	<i>38,490</i>	<i>29,672</i>	<i>14,835</i>	<i>4,977</i>	<i>50,549</i>	<i>44,500</i>	<i>94,023</i>	<i>138,523</i>
<b>SITE OCCUPANCY RATES (per cent)</b>								
<i>March quarter 1993</i>	<i>30.9</i>	<i>23.6</i>	<i>9.0</i>	<i>6.7</i>	<i>17.3</i>	<i>9.0</i>	<i>37.6</i>	<i>18.0</i>
<i>1994—</i>								
January	24.7	24.0	8.5	6.8	17.5	8.2	34.4	17.0
February	23.9	24.1	8.1	6.5	16.5	7.2	34.6	16.5
March	26.1	24.0	9.8	8.1	19.4	9.7	35.3	18.4
<i>March quarter 1994</i>	<i>24.9</i>	<i>24.0</i>	<i>8.8</i>	<i>7.1</i>	<i>17.9</i>	<i>8.4</i>	<i>34.8</i>	<i>17.3</i>
<b>TAKINGS FROM ACCOMMODATION (\$'000)</b>								
<i>March quarter 1993</i>	<i>315</i>	<i>332</i>	<i>170</i>	<i>65</i>	<i>662</i>	<i>664</i>	<i>880</i>	<i>1,544</i>
<i>1994—</i>								
January	101	121	51	26	243	229	312	540
February	84	107	40	18	205	179	276	454
March	107	119	61	24	260	259	312	571
<i>March quarter 1994</i>	<i>292</i>	<i>347</i>	<i>152</i>	<i>68</i>	<i>708</i>	<i>666</i>	<i>899</i>	<i>1,566</i>

TABLE 10 — VISITOR HOSTELS BY STATISTICAL DIVISION, NORTHERN TERRITORY

<i>Particulars</i>	<i>Darwin (SD)</i>	<i>Northern Territory - Balance (SD)</i>	<i>Northern Territory</i>
ESTABLISHMENTS, CAPACITY AND EMPLOYMENT			
<i>March quarter 1993—</i>			
Establishments	15	22	37
Bed spaces	1,329	1,762	3,091
Employment (persons)	50	116	166
<i>March quarter 1994—</i>			
Establishments	12	27	39
Bed spaces	1,101	1,843	2,944
Employment (persons)	56	85	141
GUEST NIGHTS			
<i>March quarter 1993</i>	<i>43,803</i>	<i>62,502</i>	<i>106,305</i>
<i>1994—</i>			
January	9,908	22,241	32,149
February	9,916	20,901	30,817
March	12,923	24,524	37,447
<i>March quarter 1994</i>	<i>32,747</i>	<i>67,666</i>	<i>100,413</i>
BED OCCUPANCY RATES (per cent)			
<i>March quarter 1993</i>	<i>36.6</i>	<i>39.4</i>	<i>38.2</i>
<i>1994—</i>			
January	29.0	38.9	35.2
February	32.2	40.5	37.4
March	37.9	43.8	41.5
<i>March quarter 1994</i>	<i>33.0</i>	<i>41.1</i>	<i>38.1</i>
GUEST ARRIVALS			
<i>March quarter 1993</i>	<i>12,481</i>	<i>31,304</i>	<i>43,785</i>
<i>1994—</i>			
January	4,712	11,648	16,360
February	4,696	9,857	14,553
March	7,978	12,977	20,955
<i>March quarter 1994</i>	<i>17,386</i>	<i>34,482</i>	<i>51,868</i>
AVERAGE LENGTH OF STAY (days)			
<i>March quarter 1993</i>	<i>3.5</i>	<i>2.0</i>	<i>2.4</i>
<i>1994—</i>			
January	2.1	1.9	2.0
February	2.1	2.1	2.1
March	1.6	1.9	1.8
<i>March quarter 1994</i>	<i>1.9</i>	<i>2.0</i>	<i>1.9</i>
TAKINGS FROM ACCOMMODATION (\$'000)			
<i>March quarter 1993</i>	<i>479</i>	<i>805</i>	<i>1,284</i>
<i>1994—</i>			
January	115	299	414
February	115	278	393
March	156	316	472
<i>March quarter 1994</i>	<i>386</i>	<i>892</i>	<i>1,279</i>

# Northern Territory Statistical Subdivisions



## EXPLANATORY NOTES

\*\*\*\*\*

## INTRODUCTION

1 This publication contains data for Northern Territory from a quarterly survey of tourist accommodation establishments. The period covered by the latest survey is the 3 months ended 31 March 1994.

## SCOPE

2 Tourist accommodation establishments currently included in the survey comprise two groups:

- Establishments which provide predominantly short-term accommodation (i.e. for periods of less than 2 months) to the general public. These include:

*Hotels, motels and guest houses, with facilities* being hotels licensed to operate a public bar and motels, private hotels and guest houses all of which provide a bath (or shower) and toilet in most guest rooms and have breakfast available for guests.

NOTE: From December quarter 1993, hotel, motel and guest house establishments with fewer than five rooms have been formally excluded from the scope of this statistical collection. This change in scope resulted in the exclusion of one establishment which in the September quarter 1993 Survey aggregates for Northern Territory represented 1.1 per cent of hotel, motel and guest house establishments but accounted for a negligible proportion of accommodation capacity, occupancy and takings.

*Holiday flats, units and houses* (excluding establishments predominantly operated on a time share basis) which are operated by owners or managers who have sole letting rights to at least five flats, units or houses or by real estate agents for short-term letting. They are mainly self-contained in terms of cooking, bath (or shower) and toilet facilities and do not have breakfast available for guests. Data for holiday flats, units and houses include short-term owner occupation as well as paying guest occupation.

*Visitor hostels* which provide accommodation to visitors on a bed basis (rather than by the room). This category does not include establishments providing charity type accommodation (e.g. Salvation Army hostels) nor hotels, motels and guest houses without in-room facilities which provide accommodation on a per room basis.

- *Caravan parks* which provide either predominantly short-term (i.e. for periods of less than 2 months) or predominantly long-term (i.e. for periods of 2 months or more) accommodation to the general public and which provide powered sites for caravans and toilet, shower and laundry facilities for guests.

3 Data collected and published for each type of establishment (other than holiday flats, units and houses) include both long-term and short-term guests at these establishments.

4 Establishments which provide more than one type of accommodation (e.g. a motel with attached caravan park) are treated as two or more separate establishments. However, self-contained units, flats, cabins, etc. attached to hotels, motels or to caravan parks are included in the capacity for those establishments and not treated as separate holiday flat, unit or house establishments.

## DEFINITIONS

5 *Number of establishments.* For hotels, motels and guest houses, caravan parks and visitor hostels, the number of establishments within the scope of the survey which operated for any part of the survey period, or which closed temporarily for the quarter for seasonal reasons.

6 *Number of letting entities.* For holiday flats, units and houses, the number of owners, managers or real estate agents within the scope of the survey who operated for any part of the survey period.

7 Capacity in terms of *Guest rooms, Bed spaces, Holiday units* or *Caravan park sites, etc.* is the maximum number available to accommodate paying guests during the survey period. Capacity closed temporarily for seasonal reasons is included.

8 *Bed spaces.* Three-quarter beds are counted as one bed space; double beds as two bed spaces. Cots are excluded.

9 *Total caravan park capacity* comprises *On-site vans, Other powered sites, Unpowered sites* and *Cabins, etc.*

\*\*\*\*\*

## EXPLANATORY NOTES—continued

\*\*\*\*\*

## DEFINITIONS—continued

10 *Room nights available.* The number of guest rooms available multiplied by the number of days for which they were available during the survey period. Includes operating periods only for establishments closing (other than for seasonal reasons) or opening during the survey period.

11 Occupancy in terms of *Room nights*, *Unit nights* or *Site nights occupied* refers to the total number of nights each guest room, holiday unit or caravan park site, etc. was occupied during the survey period.

NOTE: From September quarter 1992, caravan park sites, etc. permanently reserved for 2 months or more at the end of the survey period but only casually occupied by their tenants have been recorded continuously as *Site nights occupied* irrespective of whether the tenants of individual sites were in residence on any particular night. (See also paragraph 14 below). Previously, usage of these sites was recorded as *Site nights occupied* only when their tenants were in the park.

12 Occupancy in terms of *Guest nights* refers to the total number of nights each paying guest stayed during the survey period.

13 *Sites occupied by long-term guests.* The total number of sites, etc. occupied at the end of the survey period by guests who have stayed continuously for 2 months or more.

14 *Other sites permanently reserved.* The total number of powered and unpowered sites, on-site vans and cabins, etc. continuously let for 2 months or more by the end of the survey period to tenants who occupy the sites only on a casual or sporadic basis. Separate data for this item are available only from September quarter 1992.

15 *Occupancy rates* represent occupancy expressed as a percentage of total capacity available during the survey period – e.g.

$$\text{Room occupancy rate (\%)} \text{ for the period} = \frac{\text{Room nights occupied}}{(\text{Guest rooms}) \times (\text{No. of days in the period})} \times 100$$

providing that, for establishments closing (other than for seasonal reasons) or opening during the period, the denominator of the above expression includes only operating periods.

16 *Guest arrivals.* The total number of paying guests counted only on the first night they stayed at the accommodation establishment.

17 *Unit lettings.* The total number of times a holiday flat, unit or house was occupied by a new tenant, counted only on the first night it was occupied by the new tenant.

18 *Average length of stay* is expressed in number of days and calculated:

- for hotels, motels and guest houses and for visitor hostels, by dividing *Guest nights* by *Guest arrivals* and
- for holiday flats, units and houses, by dividing *Unit nights occupied* by *Unit lettings*.

19 *Takings from accommodation.* Revenue received from the provision of accommodation. Takings from meals are excluded. Takings from accommodation for each month generally represent the takings received during that month. Where payments are received in advance of, or after, the provision of accommodation to guests, the monthly figure for takings from accommodation may not necessarily bear a direct relationship to the number of guests accommodated during the month. Rental and storage fees paid to caravan parks for the keeping of private vans in parks are included in the takings of the month they are received.

20 *Star grading.* The grading of hotels and motels with facilities based on the classification system used by members of the Australian Automobile Association (AAA). The gradings are allocated according to a points system based on the amenities and facilities available to guests. Details of the grading scheme are contained in the RACV-RAASA members' publication *Accommodation Australia*, or the individual tour guides produced by members of the AAA. For the purpose of classifying establishments to a star grading in this publication, 'half' star gradings are ignored (e.g. a two and a half star grading has been shown as two star).

\*\*\*\*\*

## EXPLANATORY NOTES—continued

\*\*\*\*\*

- DEFINITIONS—continued
- 21 *Employment.* The number of persons working at accommodation establishments at the end of the survey period (including working proprietors and those working on other than accommodation activities).
- AUSTRALIAN STANDARD GEOGRAPHICAL CLASSIFICATION
22. Statistics presented in this publication have been classified according to the Australian Standard Geographical Classification (ASGC), Edition 2.3. This classification incorporates a number of hierarchic structures of geographic areas. The appropriate spatial units of the main structure of the ASGC used in this publication are:
- Statistical Local Areas (SLAs)* which are legal Local Government Areas or equivalent spatial units which serve as the smallest type of spatial unit considered appropriate for the presentation of statistics which add, without gaps or overlaps, to;
- Statistical Subdivisions (SSDs)* which in turn represent another, higher hierarchic level and add, without gaps or overlaps, to;
- Statistical Divisions (SDs)* which in turn add, without gaps or overlaps, to:
- The Northern Territory.*
- For more detailed information, refer to the ASGC (1216.0).
- The Northern Territory comprises three SDs, i.e. Darwin, Northern Territory Balance, and Offshore Areas and Migratory. Only the first two of these units are appropriate for the presentation of statistics in this publication and together add to the Northern Territory.
- UNPUBLISHED STATISTICS
- 23 The ABS may make available on request certain unpublished tourist accommodation statistics. A charge may be made for this information.
- RELATED PUBLICATIONS
- 24 Publications for Australia, and each State and Territory, are released by the respective offices of the ABS. Tourist accommodation statistics for past quarters are available on request.
- 25 Other ABS publications which may be of interest include:
- Directory of Tourism Statistics, 1991* (1130.0) (irregular)
- Overseas Arrivals and Departures, Australia* (3401.0) (monthly)
- Tourist Accommodation, Australia* (8635.0) (quarterly)
- Tourism Indicators Australia* (8634.0) (quarterly)
- Selected Accommodation Establishments, Australia, 1984-85* (8636.0) (irregular)
- 26 Current publications produced by the ABS are listed in the *Catalogue of Publications and Products* (1101.0). The ABS also issues the *Publications Advice* (1105.0) on Tuesdays and Fridays which lists publications to be released in the next few days. Both the *Catalogue* and *Publications Advice* are available from any ABS office.
- SYMBOLS AND OTHER USAGES
- n.a. not available
- .. not applicable
- nil or rounded to zero
- (T) Town
- 27 Where figures have been rounded, discrepancies may occur between totals and the sums of the component items.

81 Smith Street  
DARWIN NT 0800  
3 June 1994

BOB HARRISON  
Statistician, Northern Territory

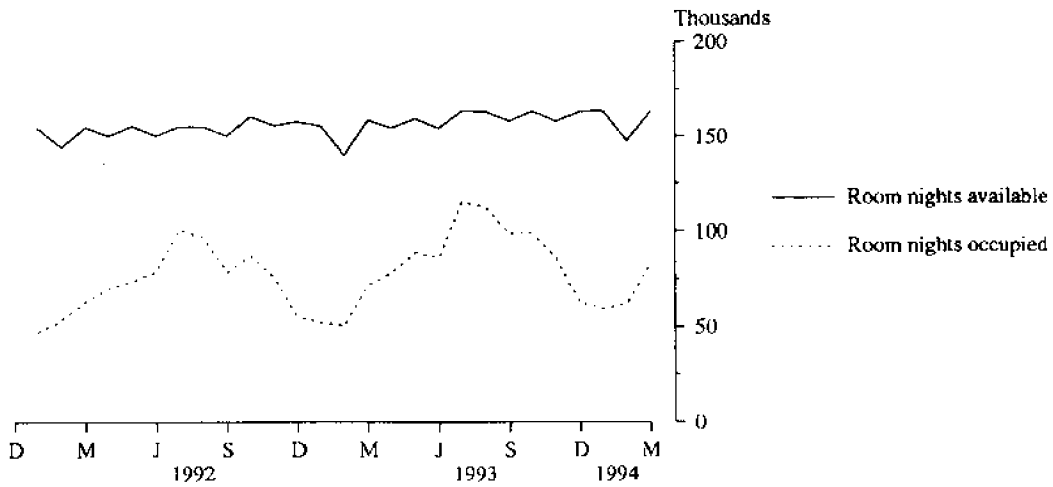
© Commonwealth of Australia 1994

Recommended retail price: \$15.00

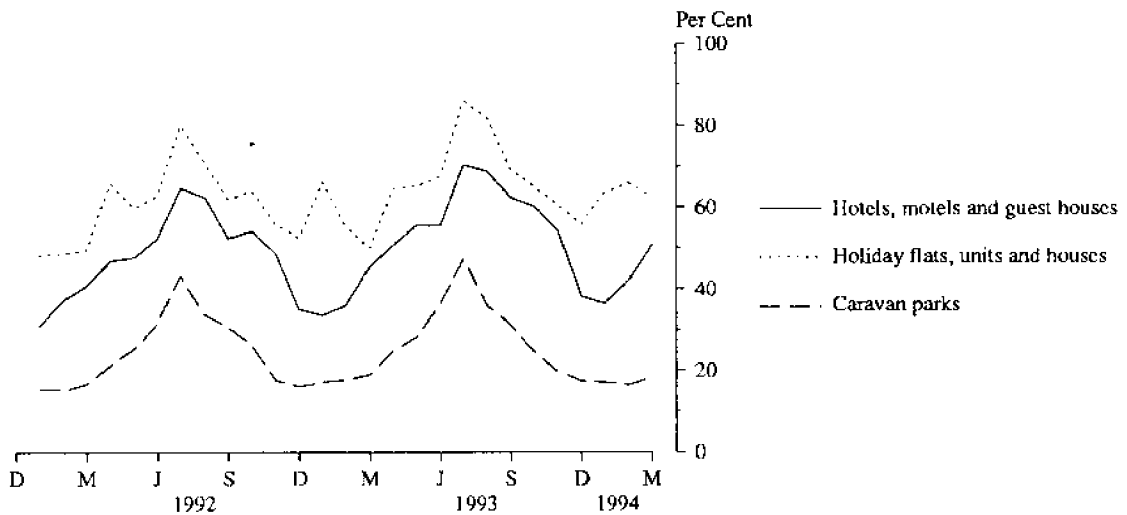


2863570003943  
ISSN 0157-1354

**MONTHLY ROOM NIGHTS AVAILABLE AND OCCUPIED:  
HOTELS, MOTELS AND GUEST HOUSES,  
NORTHERN TERRITORY**



**MONTHLY OCCUPANCY RATES,  
NORTHERN TERRITORY**



**MONTHLY TAKINGS FROM ACCOMMODATION,  
NORTHERN TERRITORY**

